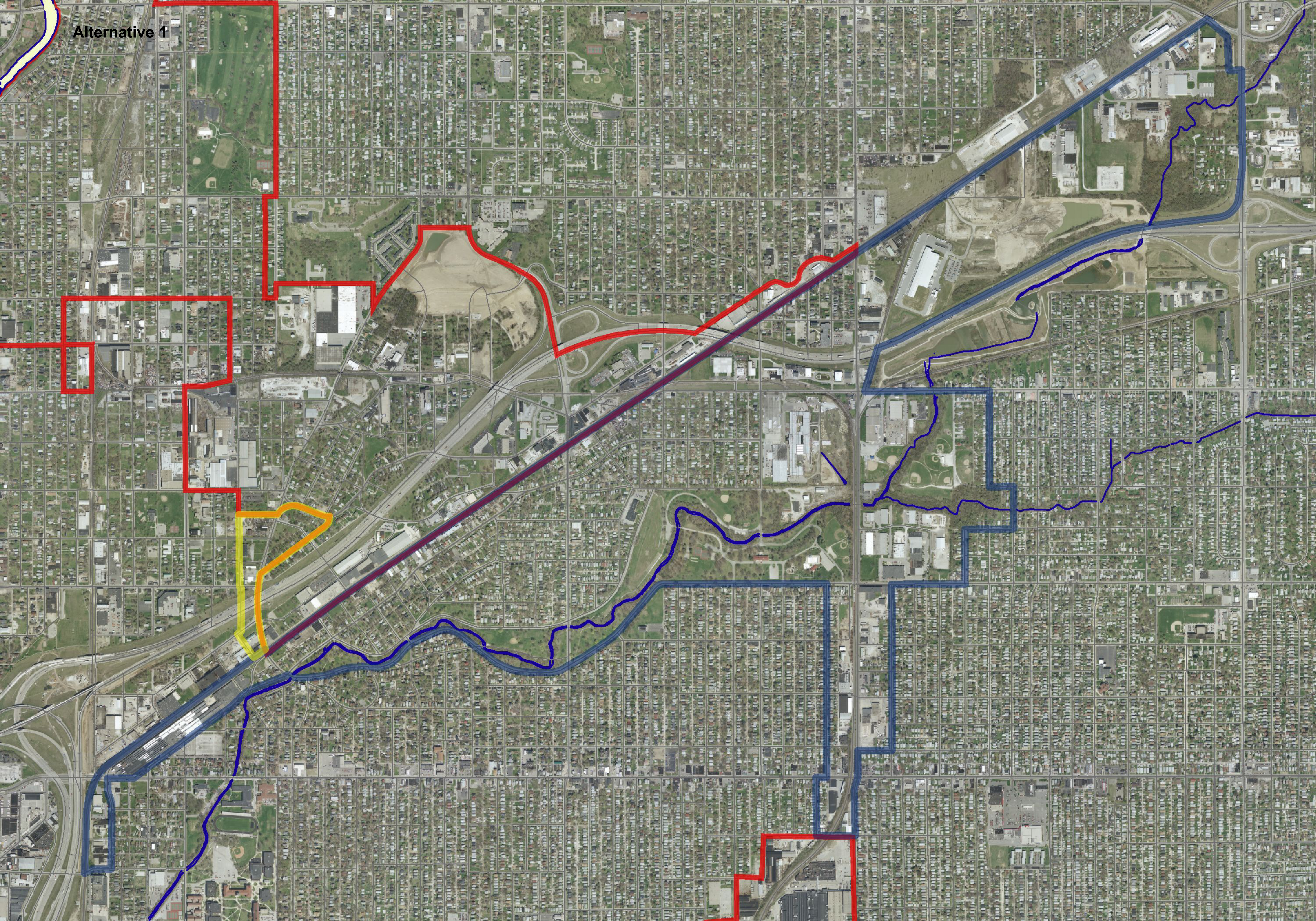


Alternative 1



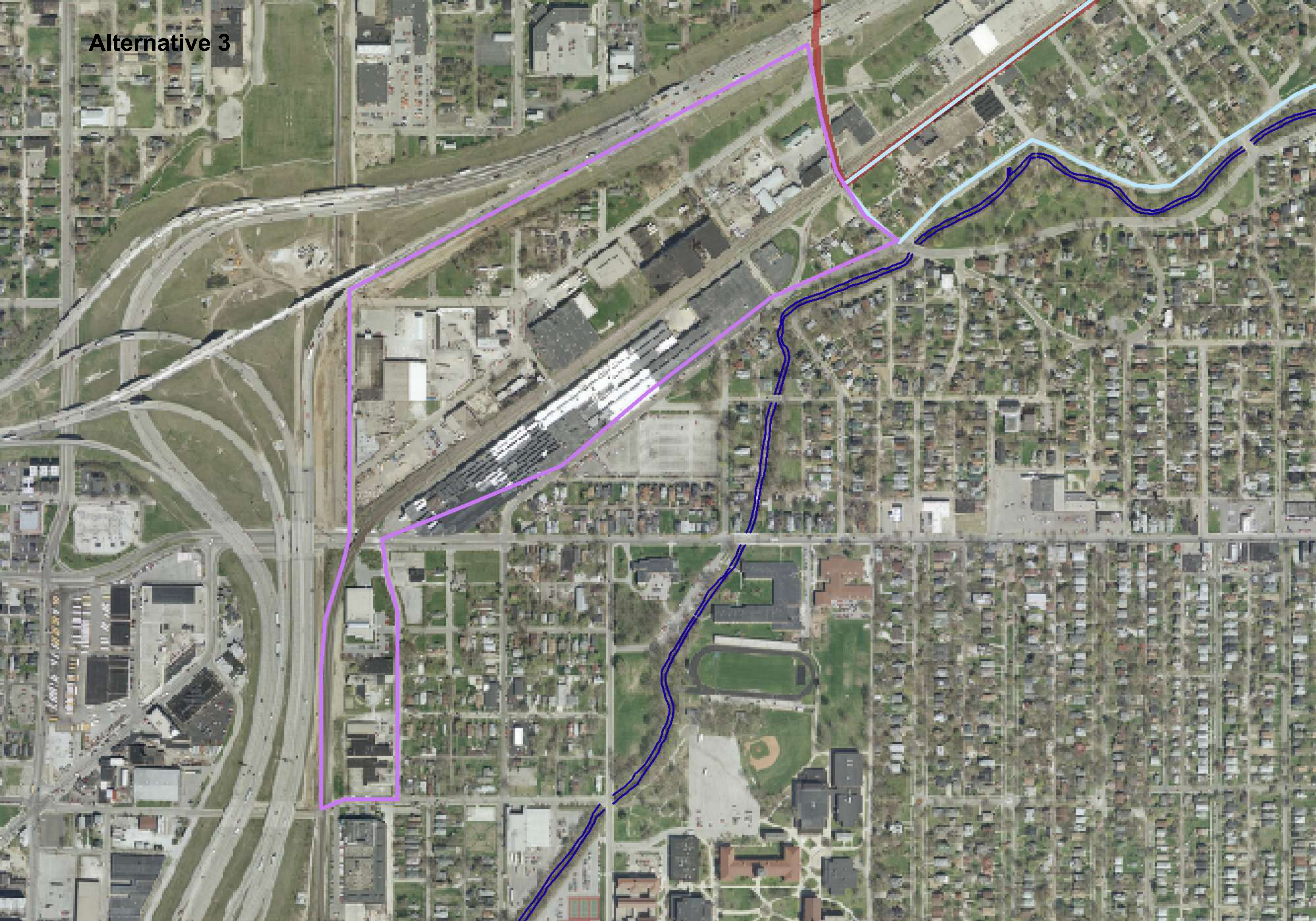


Alternative 2



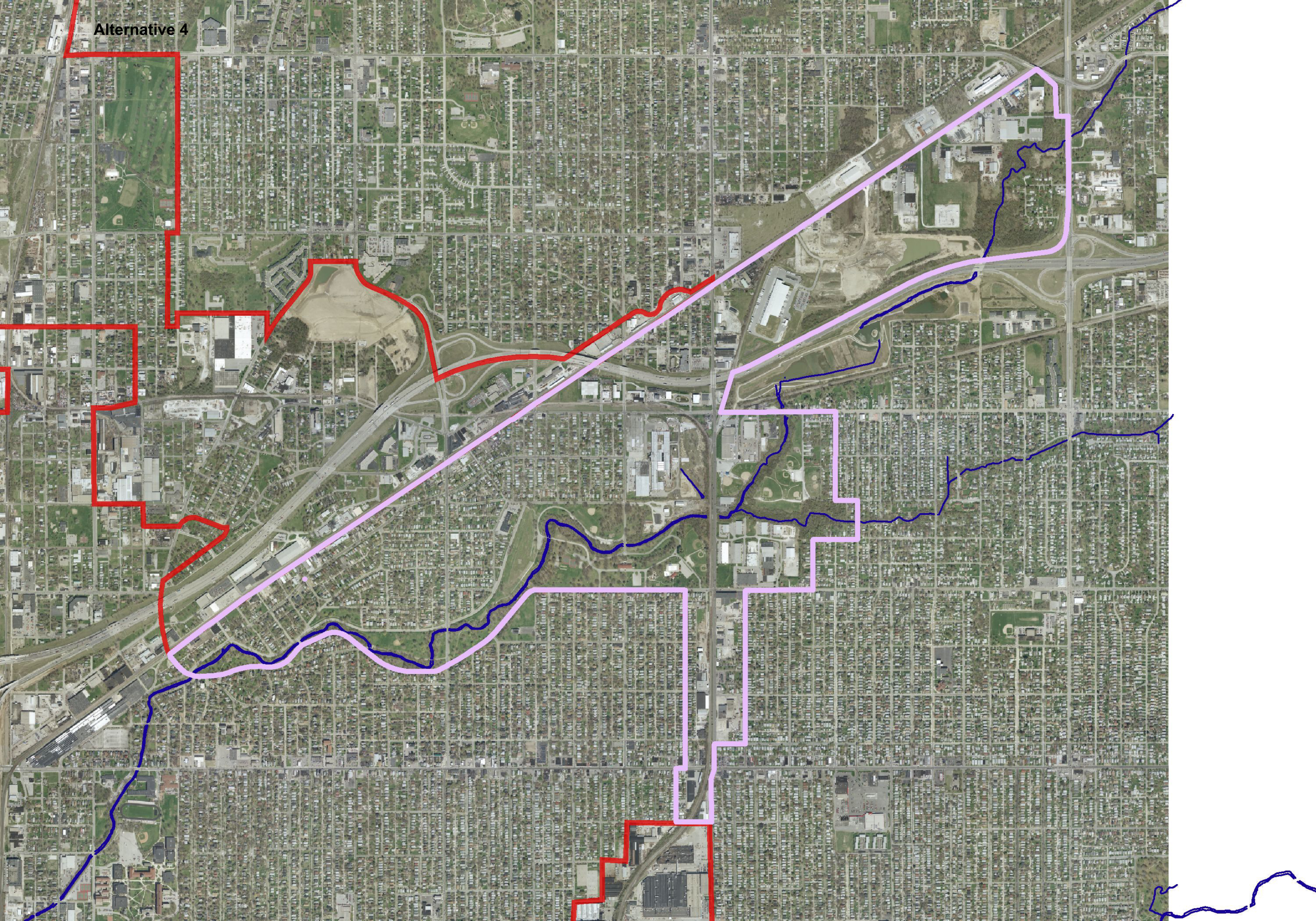


Alternative 3



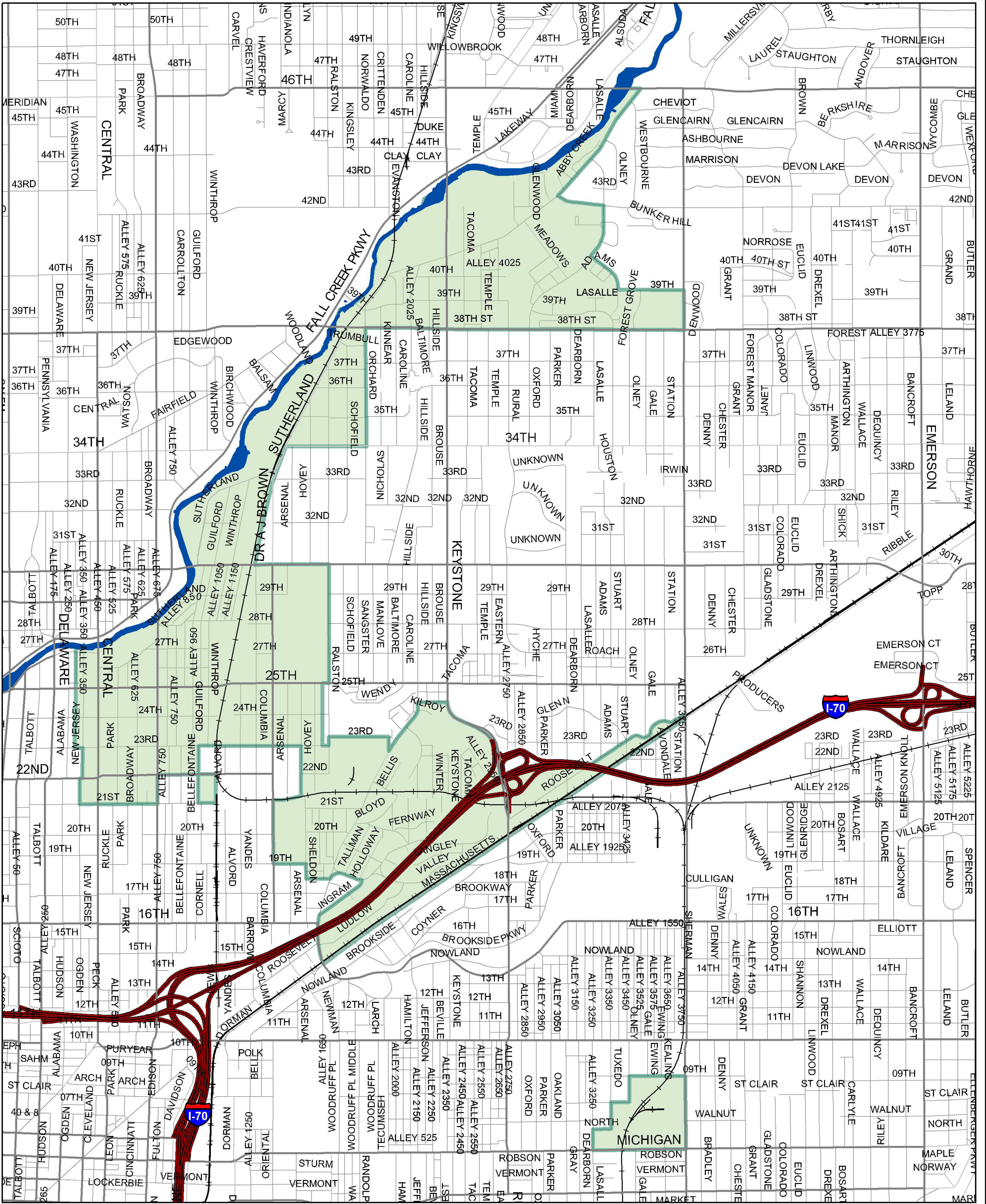


Alternative 4





# Enterprise Zone - Current & Proposed



## Legend

 Current Enterprise Zone

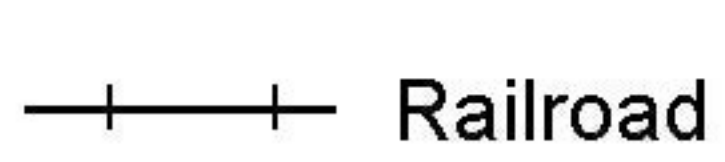
## Streets

 Expressway

 Freeway

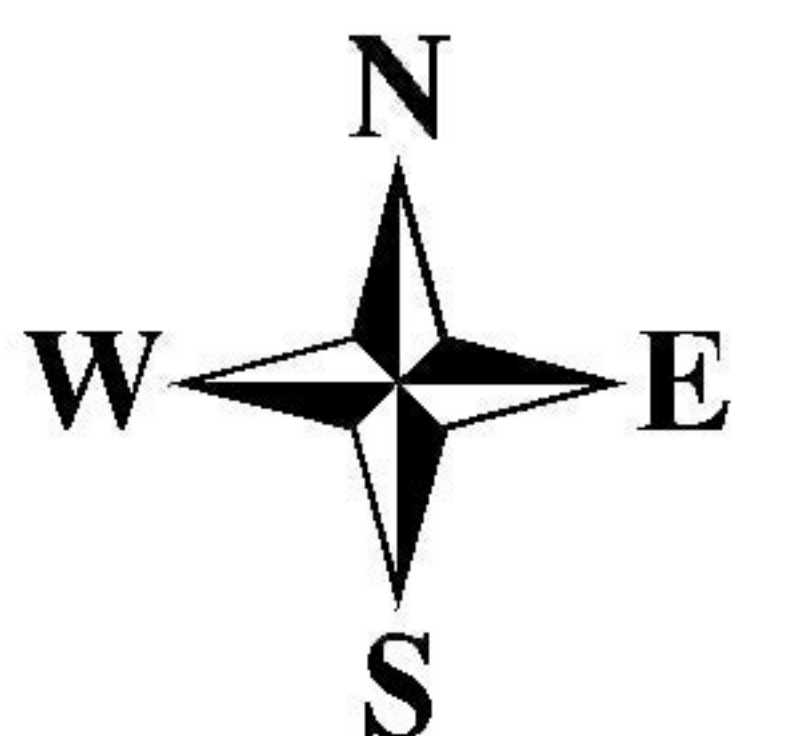
 Primary Arterial

 Collector/Local Street

 Railroad

 Rivers

0.5 0.25 0 0.5 Miles



May 28, 2004

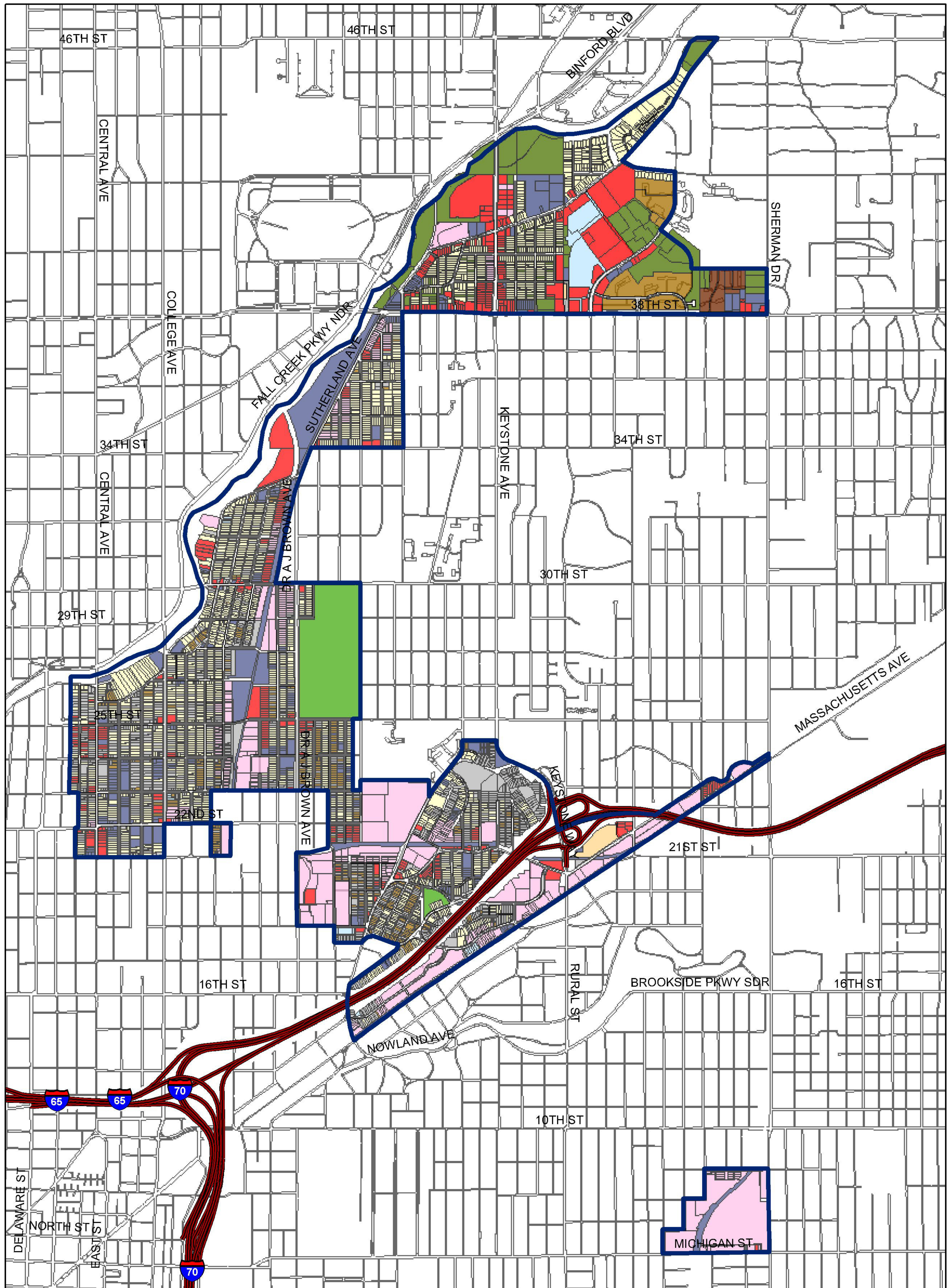
Produced by: City of Indianapolis, Division of Planning, Information Resources & Policy Analysis

Source: Marion County GIS, Division of Planning

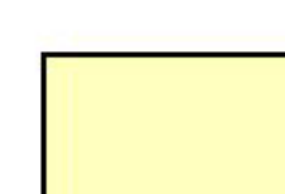
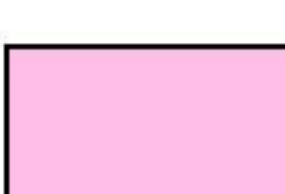








This map does not represent a legal document. It is intended to serve as an aid in graphic representation only. Information shown on this map is not warranted for accuracy or merchantability.



# Indianapolis Urban Enterprise Zone Current Land Use



## Land Use

- |  |   |
|--|---|
|  Low Density Residential (0-5 Units/Acre)     |  Industrial  |
|  Medium Density Residential (5-15 Units/Acre) |  Special Use |
|  High Density Residential (15+ Units/Acre)    |  Parks       |
|  Commercial                                   |  Unknown     |
|  Vacant Land                                  |  Parking     |

0.5 0.25 0 0.5 Miles

